



**£725,000** Lismore Road, South Croydon, CR2 7QA

- Five-bedroom semi-detached Victorian family home
- Spacious entrance hall, living room and dining room opening onto patio
- Three double bedrooms and a single on the first floor
- Excellent storage including loft space and lean-to
- Close to East Croydon station and Lloyd Park tram stop
- High ceilings, bay sash windows, cornicing and feature fireplaces
- Large kitchen/breakfast room ideal for family living
- Top floor bedroom with roof window and en suite
- Secluded rear and front gardens
- Near top schools including Royal Russell, Whitgift & Trinity

### Elegant Five Bedroom Victorian Family Home Full of Character and Charm

We are delighted to present to the market this beautifully preserved and thoughtfully enhanced five bedroom semi-detached Victorian home, situated on a desirable residential road. From the moment you step into the grand entrance hall, you are welcomed by the timeless character that defines this impressive period property.

Bursting with original features including high ceilings, decorative cornicing, feature fireplaces, beautiful windows with plantation shutters, this home offers a wonderful balance of classic elegance and modern family living.

The ground floor boasts a large living room, a generous dining room opening onto a private patio, and a spacious kitchen/breakfast room ideal for day-to-day life and entertaining.

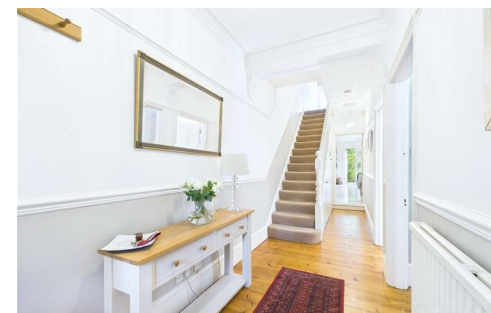
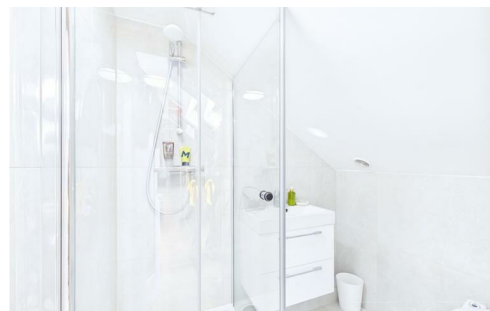
Upstairs, the first floor offers three generous double bedrooms, a modern family bathroom, and a fourth single bedroom—ideal as a nursery or office. The top floor features a fifth bedroom with en suite and large roof window with views.

The property also benefits from ample storage, including a lean-to and loft space, and a secluded rear garden ideal for relaxing or entertaining.

Located within easy reach of East Croydon station, with fast links to Central London and the South Coast, and Lloyd Park tram stop offering direct connections to Wimbledon, New Addington, and Beckenham. The vibrant Croydon town centre is also nearby for shopping, dining, and amenities.

Families will appreciate proximity to highly regarded schools including Royal Russell, Whitgift, Trinity, Croham Hurst, and Croydon High. For outdoor space, Lloyd Park (114 acres), Croham Hurst Woods, and Shirley Hills are all within walking distance.

A rare opportunity to own a spacious and elegant period home in a prime, well-connected location. Early viewing is recommended.



**TAX BAND: E | EPC: 50** Agents Note: Whilst every care has been taken to prepare these sales particulars, they are for guidance purposes only. All measurements are approximate and for general guidance purposes only and whilst every care has been taken to ensure their accuracy, they should not be relied upon and potential buyers are advised to recheck the measurements



